



WEVER & DUCRÉ
LIGHTING

PLANO

IP44 1.0 PAR16

118420B0

Project	
Type	
Notes	
Quantity	
Date	

GENERAL

Ceiling , Recessed
 Black Matt
 RAL 9005^a
 Front IP44
 Back IP20
 Interior
 Output: 370^b, 390^c lm
 CIE flux code: 94 98 100 100 81

LED

Lamp PAR16
 Socket GU10
 max. per socket 12.0 W
 CRI ≥ 90

ELECTRICAL

100 - 240 V
 LED Inset 6.5 W
 Class 2

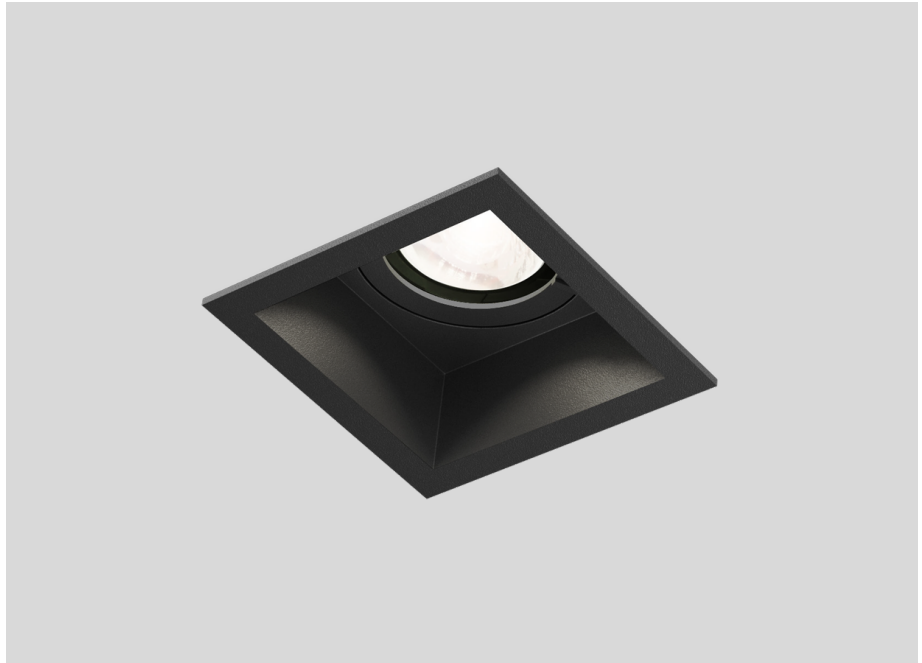
PHYSICAL

Length 85 mm
 Width 85 mm
 Height 122 mm
 0.19 kg
 wire springs

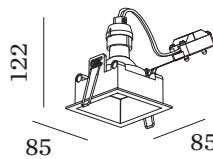
CUTOUT

Length 74 mm
 Width 78 mm
 Min. ceiling thickness 4 mm
 Max. ceiling thickness 30 mm
 Recessed depth 130 mm

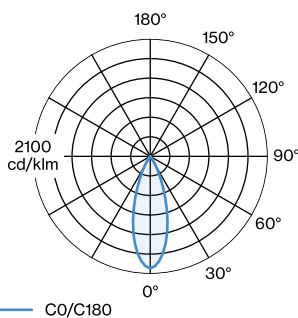
^a Color may deviate slightly due to production conditions.
^b PAR16 LAMP 2700K CRI90
^c PAR16 LAMP 3000K CRI90



Squared ceiling recessed downlight made from die-cast aluminium; surface Black Matt; powder coated, matt texture; RAL 9005; installation without tools using wire springs; suitable for ceiling thickness of 4-30 mm; recessed depth 130 mm; lamp socket GU10; lamp type PAR16; max. 12W; 100 - 240 V; degree of protection from below IP44; from above IP20; Class 2; lamp not included;



LIGHT DISTRIBUTION





WEVER & DUCRÉ
LIGHTING

PLANO

IP44 1.0 PAR16

118420B0

LAMPS

PAR16 LED Lamp

TYPE	COLOUR	Ø · H (MM)	ORDERCODE
2700K >90 CRI GU10	Black	∅50 · 60	9 0 1 2 2 8 B 3
3000K >90 CRI GU10	Black	∅50 · 60	9 0 1 2 2 8 B 5
2700K >90 CRI GU10	White	∅50 · 60	9 0 1 2 2 8 W 3
3000K >90 CRI GU10	White	∅50 · 60	9 0 1 2 2 8 W 5
2700K >80 CRI GU10	Silver	∅50 · 60	9 0 5 2 2 7 S 2
3000K >80 CRI GU10	Silver	∅50 · 60	9 0 5 2 2 7 S 4