



**WEVER & DUCRÉ**  
LIGHTING

# RON 1.0 PAR16

111120B0

Project	.....
Type	.....
Notes	.....
Quantity	.....
Date	.....

## GENERAL

Ceiling , Recessed  
Tilt max 35°  
Rotation 355°  
Black Matt  
RAL 9005<sup>a</sup>  
IP20  
Interior  
Output: 445<sup>b</sup>, 465° lm  
CIE flux code: 94 98 100 100 96

## LED

Lamp PAR16  
Socket GU10  
max. per socket 12.0 W  
CRI ≥ 90

## ELECTRICAL

100 - 240 V  
LED Inset 6.5 W  
Class 2

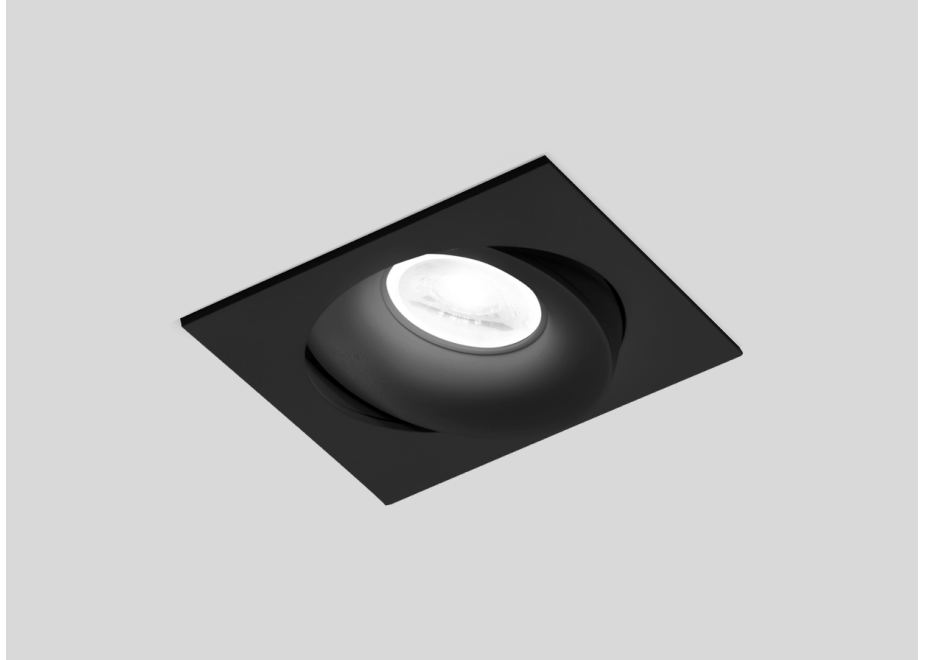
## PHYSICAL

Length 110 mm  
Width 110 mm  
Height 103 mm  
0.34 kg  
wire springs

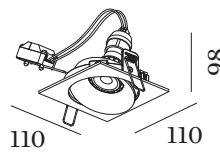
## CUTOUT

Diameter 102-104 mm  
Min. ceiling thickness 4 mm  
Max. ceiling thickness 25 mm  
Recessed depth 110 mm

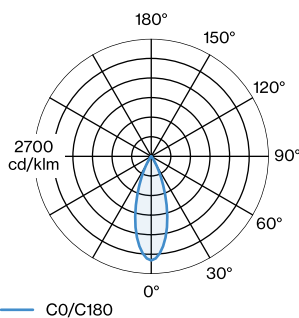
<sup>a</sup> Color may deviate slightly due to production conditions.  
<sup>b</sup> PAR16 LAMP 2700K CRI90  
<sup>c</sup> PAR16 LAMP 3000K CRI90



Squared ceiling recessed luminaire made from aluminium; surface Black Matt; powder coated, matt texture; RAL 9005; installation without tools using wire springs; suitable for ceiling thickness of 4-25 mm; recessed depth 110 mm; lamp socket GU10; lamp type PAR16; max. 12W; 100 - 240 V; 355° rotatable and 35° tiltable; degree of protection IP20; Class 2; lamp not included;



## LIGHT DISTRIBUTION



[111120B0] The technical data represent rated values for an ambient temperature of 25°C. The data values for the luminous flux are initially subject to a tolerance of +/- 10%, those for the electrical connected load are initially subject to a tolerance of +/- 10%, and those for the colour temperature are initially subject to a tolerance of +/- 150 K. No liability is assumed for typographical or printing errors. The general terms and conditions of Wever & Ducré apply.  
© Wever & Ducré BV · Spinnerijstraat 99/21 · 8500 Kortrijk · Belgium · www.weverducre.com



WEVER & DUCRÉ  
LIGHTING

# RON 1.0 PAR16

111120B0

## LAMPS

### PAR16 LED Lamp

TYPE	COLOUR	Ø-H (MM)	ORDERCODE
2700K   >90 CRI   GU10	Black	ø50-60	9 0 1 2 2 8 B 3
3000K   >90 CRI   GU10	Black	ø50-60	9 0 1 2 2 8 B 5
2700K   >90 CRI   GU10	White	ø50-60	9 0 1 2 2 8 W 3
3000K   >90 CRI   GU10	White	ø50-60	9 0 1 2 2 8 W 5
2700K   >80 CRI   GU10	Silver	ø50-60	9 0 5 2 2 7 S 2
3000K   >80 CRI   GU10	Silver	ø50-60	9 0 5 2 2 7 S 4