



WEVER & DUCRÉ
LIGHTING

RON 2.0 PAR16

111220B0

Project

Type

Notes

Quantity

Date

GENERAL

Ceiling , Recessed

Tilt max 35°

Rotation 355°

Black Matt

RAL 9005^a

IP20

Interior

Output: 885^b, 925^c lm

CIE flux code: 94 98 100 100 96

LED

Lamp 2 x PAR16

Socket GU10

max. per socket 12.0 W

CRI ≥ 90

ELECTRICAL

100 - 240 V

LED Inset 6.5 W

Total insets 13.0 W

Class 2

PHYSICAL

Length 220 mm

Width 110 mm

Height 103 mm

0.69 kg

wire springs

CUTOUT

Length 210 mm

Width 102 mm

Min. ceiling thickness 4 mm

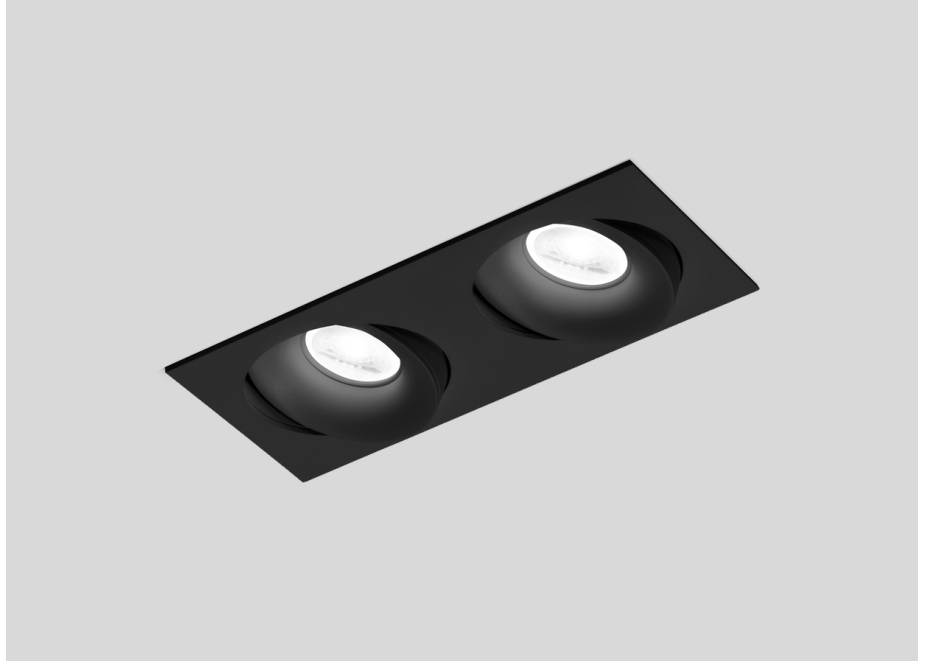
Max. ceiling thickness 25 mm

Recessed depth 110 mm

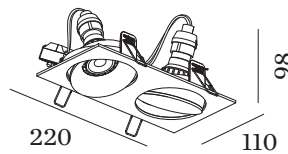
^a Color may deviate slightly due to production conditions.

^b PAR16 LAMP 2700K CRI90

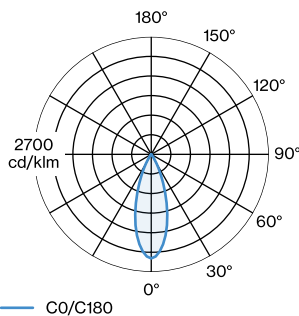
^c PAR16 LAMP 3000K CRI90



Rectangular ceiling recessed luminaire made from aluminium; surface Black Matt; powder coated, matt texture; RAL 9005; installation without tools using wire springs; suitable for ceiling thickness of 4-25 mm; recessed depth 110 mm; lamp socket GU10; lamp type PAR16; 2x max. 12W; 100 - 240 V; 355° rotatable and 35° tiltable; degree of protection IP20; Class 2; lamp not included;



LIGHT DISTRIBUTION





WEVER & DUCRÉ
LIGHTING

RON 2.0 PAR16

111220B0

LAMPS

PAR16 LED Lamp

TYPE	COLOUR	Ø · H (MM)	ORDERCODE
2700K >90 CRI GU10	Black	∅50 · 60	9 0 1 2 2 8 B 3
3000K >90 CRI GU10	Black	∅50 · 60	9 0 1 2 2 8 B 5
2700K >90 CRI GU10	White	∅50 · 60	9 0 1 2 2 8 W 3
3000K >90 CRI GU10	White	∅50 · 60	9 0 1 2 2 8 W 5
2700K >80 CRI GU10	Silver	∅50 · 60	9 0 5 2 2 7 S 2
3000K >80 CRI GU10	Silver	∅50 · 60	9 0 5 2 2 7 S 4